



Cable ID: 01-0052

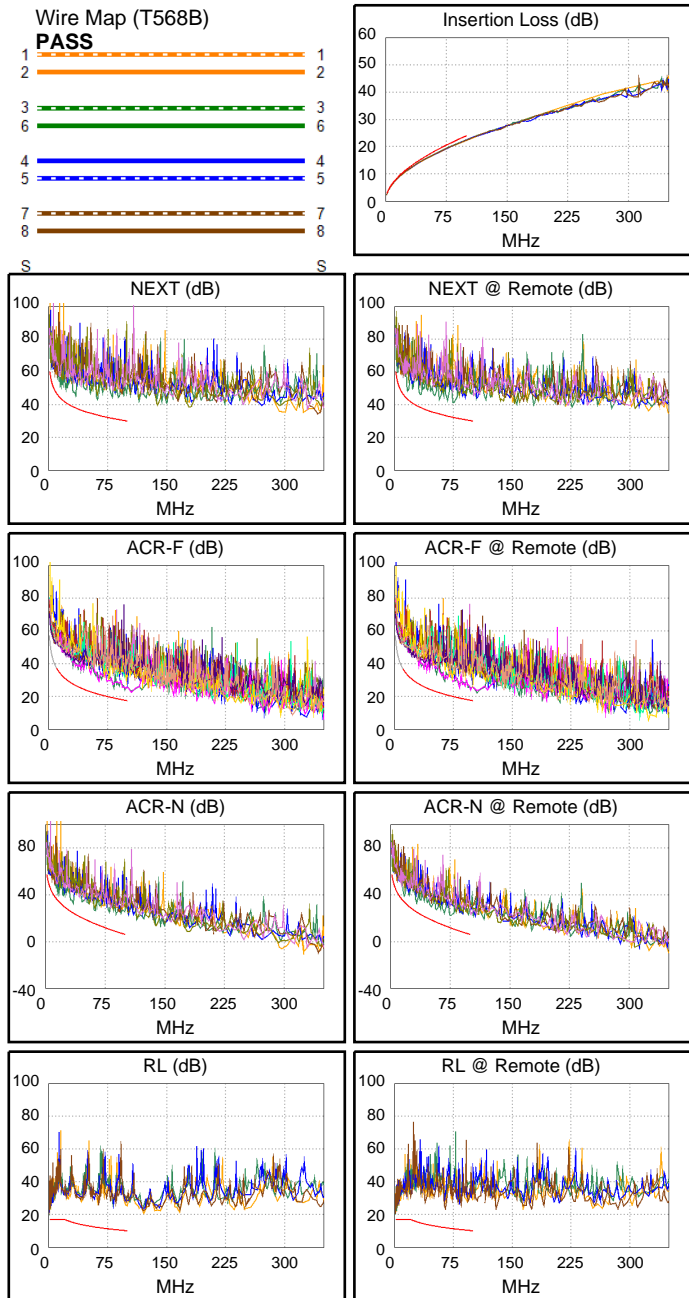
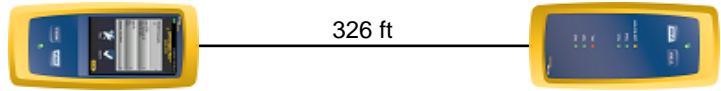
Date / Time: 12/16/2019 10:30:47 AM
Headroom 4.5 dB (NEXT 12-45)
Test Limit: TIA Cat 5e Channel
 Cable Type: Cat 5e U/UTP
 NVP: 69.0%

Operator: SDS
 Software Version: V6.1 Build 3
 Limits Version: V7.1
 Calibration Start Date:
 Main (Module): 05/07/2019
 Remote (Module): 05/07/2019

Test Summary: PASS

Model: DSX-8000
 Main S/N: 1852004
 Remote S/N: 1851494
 Main Adapter: DSX-CHA804
 Remote Adapter: DSX-CHA804

Length (ft), Limit 328	[Pair 78]	326
Prop. Delay (ns), Limit 555	[Pair 36]	491
Delay Skew (ns), Limit 50	[Pair 36]	10
Resistance (ohms)	[Pair 78]	23.61
Insertion Loss Margin (dB)	[Pair 36]	1.5
Frequency (MHz)	[Pair 36]	100.0
Limit (dB)	[Pair 36]	24.0



Worst Case Margin Worst Case Value

PASS	MAIN	SR	MAIN	SR
Worst Pair	12-45	12-45	12-45	12-45
NEXT (dB)	6.4	4.5	9.6	8.7
Freq. (MHz)	15.1	16.8	62.5	75.0
Limit (dB)	44.0	43.3	33.6	32.2
Worst Pair	45	45	12	12
PS NEXT (dB)	8.5	7.2	15.0	11.2
Freq. (MHz)	15.1	16.8	94.5	75.0
Limit (dB)	41.0	40.3	27.5	29.2

PASS	MAIN	SR	MAIN	SR
Worst Pair	12-45	45-12	12-45	45-12
ACR-F (dB)	5.7	5.5	5.7	5.5
Freq. (MHz)	96.5	96.5	96.5	96.5
Limit (dB)	17.7	17.7	17.7	17.7
Worst Pair	45	12	45	12
PS ACR-F (dB)	8.3	7.8	8.5	7.8
Freq. (MHz)	82.8	96.5	96.8	96.5
Limit (dB)	16.0	14.7	14.7	14.7

N/A	MAIN	SR	MAIN	SR
Worst Pair	12-45	12-45	12-45	12-45
ACR-N (dB)	6.8	4.9	15.1	10.0
Freq. (MHz)	15.1	16.8	88.5	75.0
Limit (dB)	35.2	34.0	8.5	11.7
Worst Pair	45	45	12	12
PS ACR-N (dB)	8.9	7.6	16.8	12.6
Freq. (MHz)	15.1	16.8	94.5	75.0
Limit (dB)	32.2	31.0	4.2	8.7

PASS	MAIN	SR	MAIN	SR
Worst Pair	36	78	12	78
RL (dB)	8.8	8.1	15.2	11.2
Freq. (MHz)	2.4	2.5	99.8	65.3
Limit (dB)	17.0	17.0	10.0	11.9

Compliant Network Standards:
 10BASE-T 100BASE-TX 100BASE-T4
 1000BASE-T ATM-25 ATM-51
 ATM-155 100VG-AnyLan TR-4
 TR-16 Active TR-16 Passive