



**Cable ID: REXANT-UTP-0.57-CAT6**

Date / Time: 07/29/2019 06:34:50 PM

Headroom 3.5 dB (NEXT 36-45)

Test Limit: TIA Cat 6 Channel

Cable Type: Cat 6 U/UTP

NVP: 69.0%

Operator: □□□□

Software Version: V6.1 Build 3

Limits Version: V7.1

Calibration Start Date:

Main (Module): 01/30/2018

Remote (Module): 01/30/2018

**Test Summary: PASS**

Model: DSX-8000

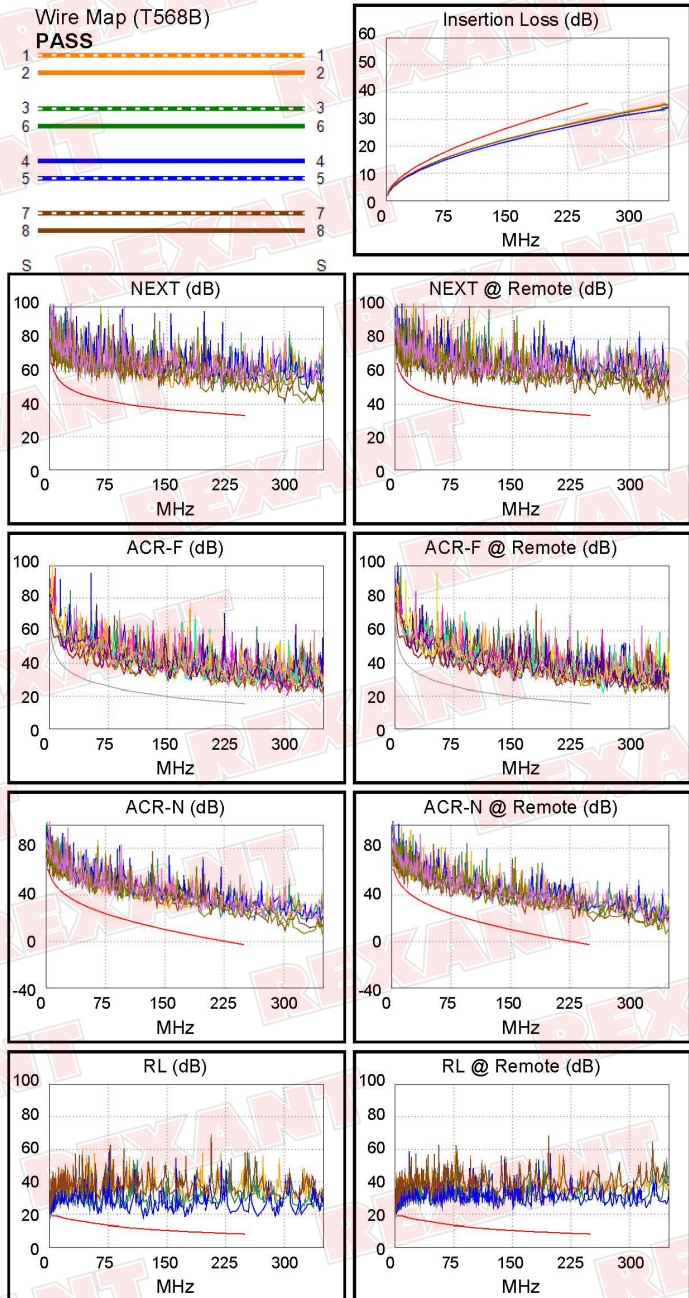
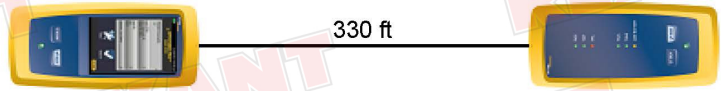
Main S/N: 1737205

Remote S/N: 1737289

Main Adapter: DSX-CHA804

Remote Adapter: DSX-CHA804

|                             |           |       |
|-----------------------------|-----------|-------|
| Length (ft), Limit 328      | [Pair 45] | 330   |
| Prop. Delay (ns), Limit 555 | [Pair 12] | 502   |
| Delay Skew (ns), Limit 50   | [Pair 12] | 16    |
| Resistance (ohms)           | [Pair 12] | 16.16 |
|                             |           |       |
| Insertion Loss Margin (dB)  | [Pair 12] | 6.0   |
| Frequency (MHz)             | [Pair 12] | 250.0 |
| Limit (dB)                  | [Pair 12] | 35.9  |



Worst Case Margin Worst Case Value

| PASS                | MAIN  | SR    | MAIN  | SR    |
|---------------------|-------|-------|-------|-------|
| Worst Pair          | 36-45 | 36-45 | 36-78 | 36-45 |
| <b>NEXT (dB)</b>    | 3.5   | 4.5   | 12.3  | 13.2  |
| Freq. (MHz)         | 1.9   | 2.1   | 199.5 | 229.5 |
| Limit (dB)          | 65.0  | 65.0  | 34.8  | 33.8  |
| Worst Pair          | 36    | 36    | 36    | 36    |
| <b>PS NEXT (dB)</b> | 5.4   | 6.5   | 14.8  | 15.8  |
| Freq. (MHz)         | 3.9   | 4.0   | 238.5 | 230.5 |
| Limit (dB)          | 60.8  | 60.5  | 30.5  | 30.8  |

| PASS                 | MAIN  | SR    | MAIN  | SR    |
|----------------------|-------|-------|-------|-------|
| Worst Pair           | 45-36 | 36-45 | 45-36 | 36-12 |
| <b>ACR-F (dB)</b>    | 7.8   | 7.8   | 9.7   | 9.2   |
| Freq. (MHz)          | 4.5   | 4.5   | 243.0 | 249.5 |
| Limit (dB)           | 50.2  | 50.2  | 15.5  | 15.3  |
| Worst Pair           | 78    | 12    | 78    | 12    |
| <b>PS ACR-F (dB)</b> | 10.2  | 10.5  | 10.5  | 10.5  |
| Freq. (MHz)          | 229.0 | 239.0 | 240.5 | 239.0 |
| Limit (dB)           | 13.1  | 12.7  | 12.6  | 12.7  |

| N/A                  | MAIN  | SR    | MAIN  | SR    |
|----------------------|-------|-------|-------|-------|
| Worst Pair           | 36-45 | 36-45 | 36-45 | 36-45 |
| <b>ACR-N (dB)</b>    | 4.3   | 5.1   | 23.0  | 20.4  |
| Freq. (MHz)          | 1.9   | 2.1   | 248.0 | 230.5 |
| Limit (dB)           | 62.0  | 62.0  | -2.6  | -0.5  |
| Worst Pair           | 36    | 36    | 36    | 36    |
| <b>PS ACR-N (dB)</b> | 6.1   | 7.2   | 22.1  | 23.9  |
| Freq. (MHz)          | 3.9   | 4.0   | 239.0 | 247.5 |
| Limit (dB)           | 56.8  | 56.5  | -4.5  | -5.5  |

| PASS           | MAIN | SR   | MAIN  | SR    |
|----------------|------|------|-------|-------|
| Worst Pair     | 36   | 36   | 45    | 45    |
| <b>RL (dB)</b> | 5.0  | 5.1  | 6.8   | 12.9  |
| Freq. (MHz)    | 3.5  | 3.5  | 120.0 | 131.5 |
| Limit (dB)     | 19.0 | 19.0 | 11.2  | 10.8  |

Compliant Network Standards:  
 10BASE-T      100BASE-TX      100BASE-T4  
 1000BASE-T    2.5GBASE-T  
 ATM-25      ATM-51  
 100VG-AnyLan    TR-4      TR-16 Active  
 TR-16 Passive